

T H E

Wallace



WWW.WALLACEVENUE.COM



The Wallace is a brand new building featuring heritage inspired architectural details, incorporated to pay homage to our unique location in the historic Shipyards area. Building features include:

- Brand new washrooms, including accessible stalls
- Open concept “servery” kitchen for food preparation
- Bridal Room / Green Room
- Beautiful wood-inspired vinyl flooring
- Elevator Access to third floor
- Additional storage facilities
- Water and power capabilities on the Outdoor Terrace
- 3360 square feet of open space with a 2330 square foot terrace
- Capacity of 200 standing and 180 seated reception.

RENTAL RATES



3360 square feet of open concept event space available for weddings, corporate events, meetings, conferences, and private parties.

Private event: \$6000.00 + GST per day

Weekday event: \$4500.00 + GST per day

Weekday half-day: \$2250.00 + GST per day

To book outdoor space, including Shipbuilder's Square, visit www.cnv.org.

PAYMENT AND DEPOSIT

A \$1500.00 non-refundable Booking Fee is required to confirm the booking, which will be applied against the full venue rental fee. A \$1,000.00 refundable Damage Deposit and remaining venue fee are due 60 days prior to the event. Cheques are preferred form of payment, we do not accept credit cards or e-transfers.



LIABILITY INSURANCE

The occupant must obtain and show proof of \$5 million in general liability insurance and list The Wallace Venue Corp. as an additional insurer.

RENTALS

The space comes with 200 garden chairs, thirty 6 foot long banquet tables, two wireless microphones and in-house speakers. There is a built-in projector and screen, which rents for \$100 per event. All other rentals including (but not limited to) linens, decor items, dinnerware etc., will need to be brought in by the occupant. A professional, experienced wedding and/or event planner is required at each event, our preferred vendors are listed in this package. Clients must also choose a caterer from our exclusive catering list.

BAR

Clients may bring in their own alcohol with a valid BC liquor license. Clients may use either Lavish Liquid Catering Ltd. for bar services or an exclusive caterer. No outside bartending companies are permitted.

NOISE RESTRICTIONS

Access to the Wallace begins at 9:00 am on the event date. The Venue is located in a residential area, all events on the terrace must end by 11:00 pm, indoors the end time is 12:00am with guests completely out of the space by 12:30am. The venue must be completely empty, in the same condition it was received by 2:00 am at the latest.

PREFERRED VENDORS

WEDDING & EVENT PLANNERS

Above & Beyond: www.aboveandbeyondeventplanning.ca
Clearwater Events: www.clearwaterevents.org
Filosophi: info@filosophi.com
Petite Pearl: www.petitepearlevents.com
Smitten Events: info@smittenevents.ca
Susanna Stewart Events: www.susannastewart.com
Sweetheart Events: savethedate@sweetheartevents.ca

RENTALS + DECOR

A & B Partytime Rentals Ltd.: sales@abpartytime.com
Bespoke Decor: hello@bespokedecor.ca
Bold Event Creative: heather@boldeventcreative.com
Debut Event Design: info@debuteventdesign.ca
Koncept Event Design: Koncept.vancouver@gmail.com
Lonsdale Event Rentals: events@lonsdaleevents.com
Lounge Works: simona@loungeworks.ca
Pedersen's Event Rentals: www.vancouver.pedersens.com

A/V

Clark's AV: www.clarksav.com
McHugh Productions: www.mchughproductions.com

MUSIC, ENTERTAINMENT & PHOTOGRAPHY

Musos Entertainment: www.musosent.com
The Apartment Photography: www.theapartmentphotography.com

ACCOMMODATION

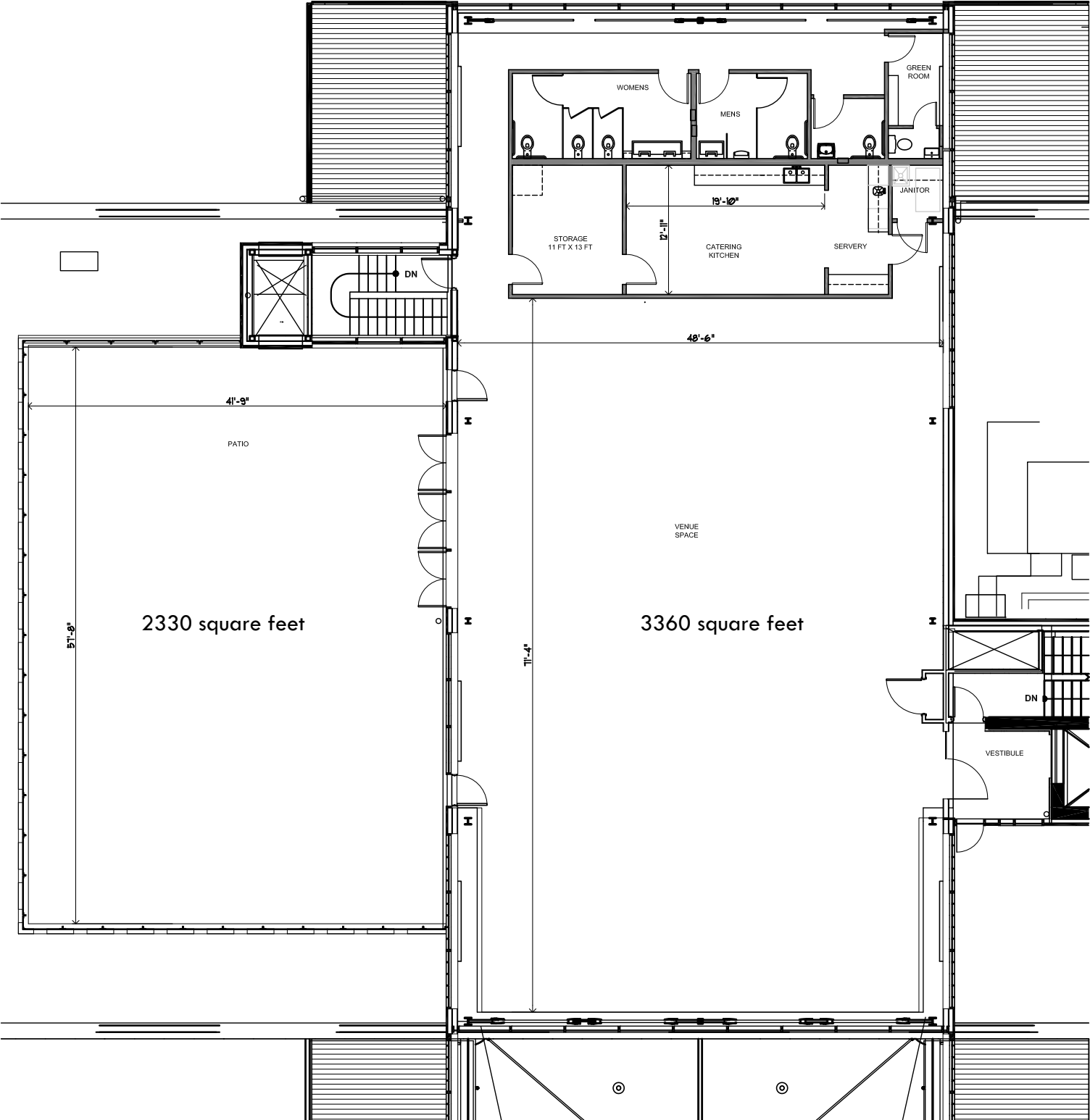
Seaside Executive Hotel: www.seasidehotelvancouver.com
Lonsdale Quay Hotel: www.lonsdalequayhotel.com
Pinnacle Hotel at the Pier: www.pinnaclepierhotel.com

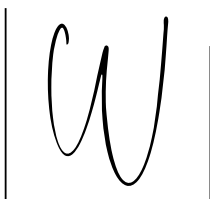
EXCLUSIVE CATERING

Cocktails & Canapes: www.cocktailsandcanapes.ca
Edge Catering: www.edg catering.ca
Forage: www.foragevancouver.com
Louis Gervais Catering: www.louisgervaiscatering.com
Railtown Catering: www.railtowncatering.ca
Savoury Chef: www.savourychef.com
Seaside: www.seasidehotelvancouver.com
The Lazy Gourmet: www.lazygourmet.ca
The Peake of Catering: www.peakeofcatering.com
Truffles Fine Foods: www.trufflesfinefoods.com
White Table Catering: www.whitetablecatering.com



FLOOR PLAN





300 -125 Victory Ship Way, North Vancouver
604.676.4063 | www.wallacevenue.com
@thewallace_venue

All photographs featured in this package by:
The Apartment Photography or Aileen Choi Photo

Owned & Managed By:

